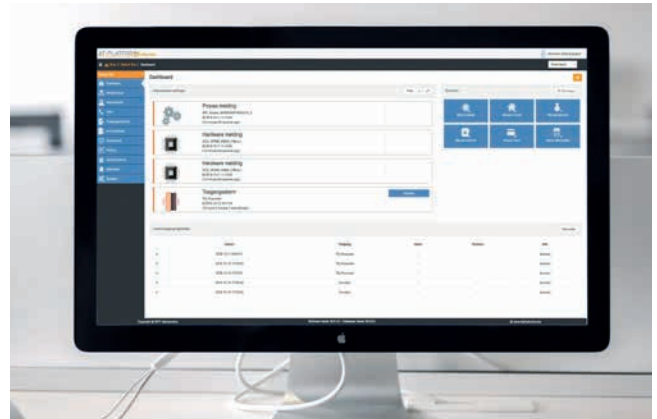


AT-PLATFORM *Enterprise*



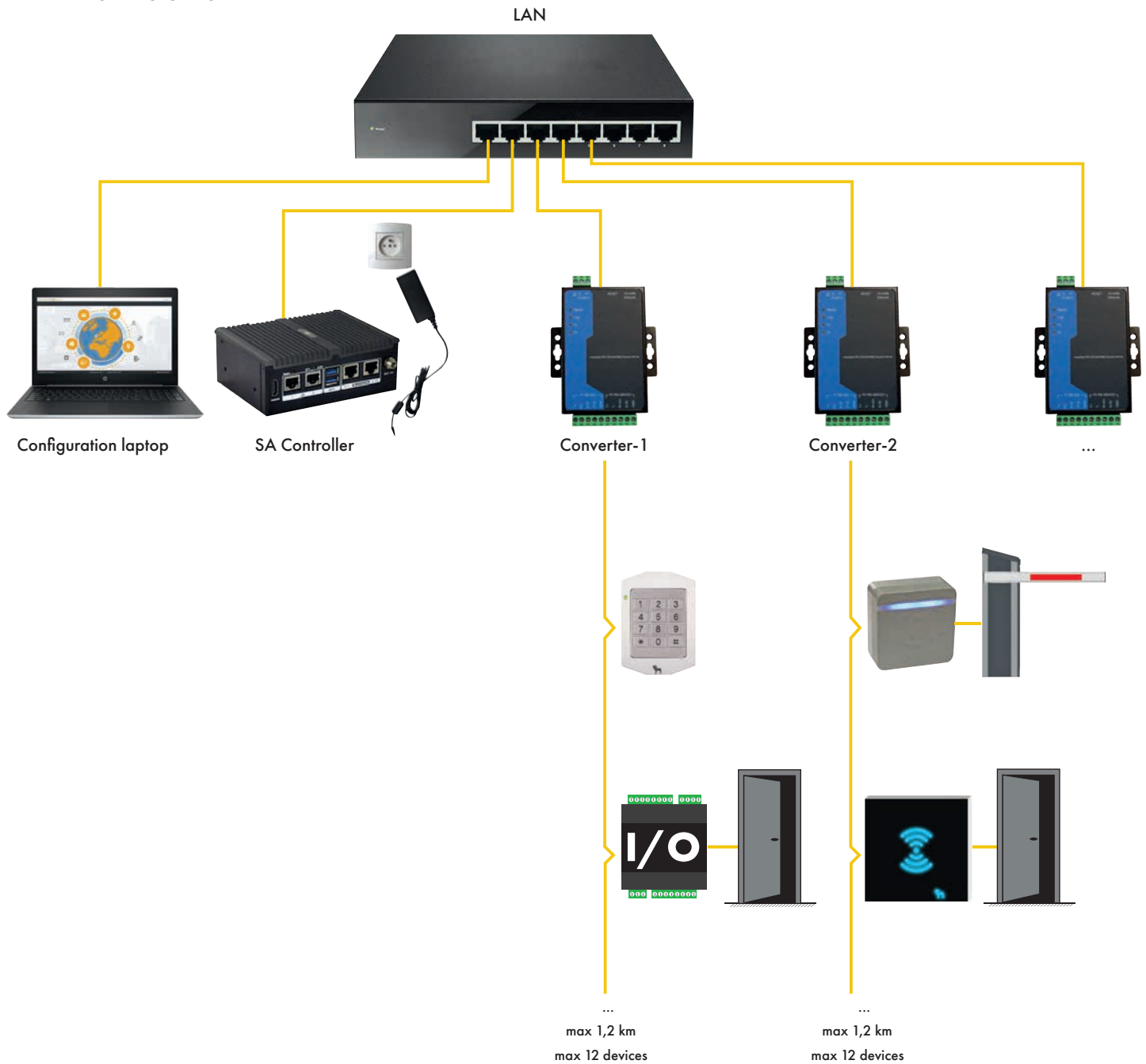
Access Control Management

- Configuration via web application
- Easy setup via templates
- No door controllers required
- Lockdown of different entrances possible
- Building management via dashboard
- **Support of various readers** such as:
RFID, UHF, barcode, Eid, chip card, as well as code keypads, mobile transmitters and remote control
- **Support for SimonsVoss locks** (Smart Intego)
with indication of battery status
- Pre-installation up to 48 devices (I/O modules and readers)

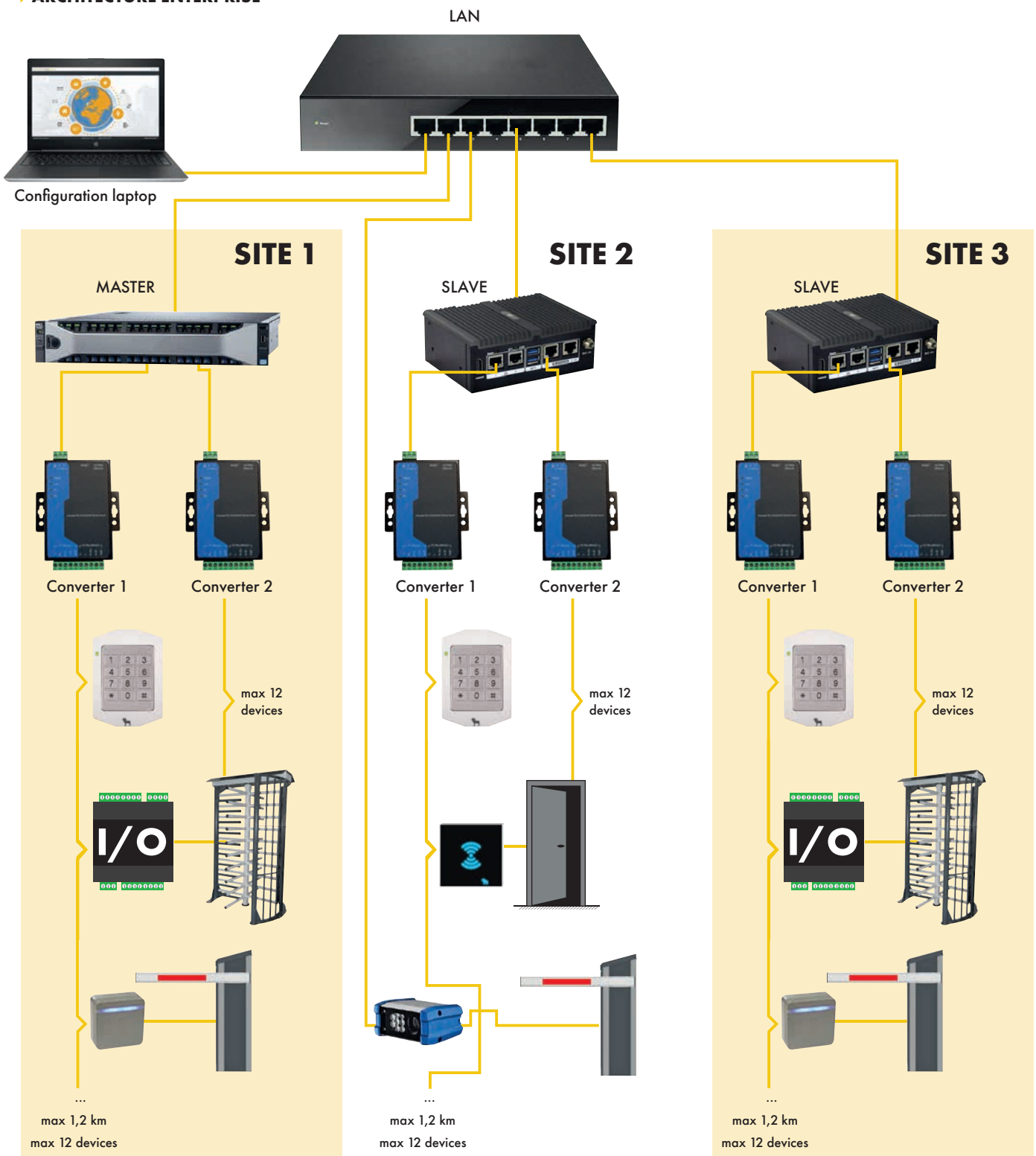


Technical specifications	AT-Platform Enterprise SA	AT-Platform Enterprise
Master Controller	1	1
Slave Controller(s)	0	15
Maximum number of devices (reader, IO...)	48	720
RFID tags / numerical codes	10.000	> 10.000
Pre-installation software	v	-
GENERAL		
Multilingualism (ENG/FR/DU/GER)		v
Dashboard with alarms (door alarms, devices offline, ...)		v
Easy testing of devices (inputs/outputs/LEDs) via web portal		v
Manual import and export of cards via simple .csv template		v
Manual export of data to .csv/Excell		v
Automatic generation and transmission of system reports via email		v
Automatic database backup		v
Connection of contact-based alarm centre (ESPA)		v
Connection with API on request		v
Multi-Site		v
ACCESS CONTROL MODULE		
Standard access control (who, where, when)		v
Flexible control of outputs and LEDs when offering a card		v
Time based access via calendar (including holidays, public holidays, general closing days)		v
Turn Counting		v
Door alarms		v
Toggle function when offering card		v
Localization person based on offered card		v
Assigning access events to a card (person)		v
Limited validity (start and end time) of a card		v
Delayed activation (access) of a card		v
Lockdown		v
Anti-Passback: • Time controlled global auto reset function • Half, temporary or full APB		v
Support double access with card reader on both sides		v
Support various card readers and code keypad		v
Support SimonsVoss locks		v
Process automatization		v
PARKING COUNTING MODULE		
Parking counting based on 1 or 2 loops		v
Control Q-Lite 1x3 Led board		v

► **ARCHITECTURE SA**



► ARCHITECTURE ENTERPRISE



► SERVER HARDWARE REQUIREMENTS

- 3,6GHz Processor
- Minimum 16GB RAM
 - > 8GB : VMWare
 - > 8GB : Windows server VM
 - > 8GB : per additional Windows 10 VM
- Raid 1 configuration (optional)

We advise to work with the most recent Dell servers.

For these servers, an installation template is available which enables easy and quick installation of the AT-Platform package.