

# CubeLine

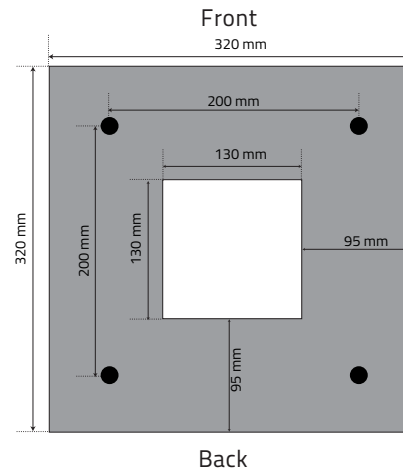
Multifunctional aluminum operating column  
for indoor and outdoor use

- **Column** in 2 mm coated aluminum or stainless steel
- **Finished** in anthracite ■ (RAL 7016) powder coating
- **Easy** installation
- Available at **different heights**
- **No maintenance**



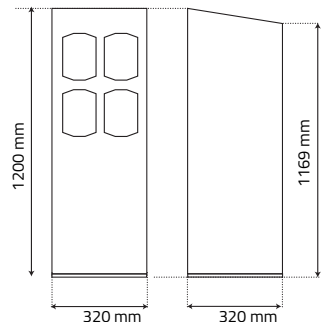
Heights	1,2 m	1,5m	1,8 m	2,4 m
<b>Colour</b>	Standard RAL 7016 ■			
<b>Housing</b>	Powdercoated aluminum, thickness 2 mm or Stainless steel			
<b>Dimensions column</b>	320 mm x 320 mm			
<b>Construction</b>	Welded construction			
<b>Inside depth</b>	314 mm			
<b>Door</b>	Lockable door at the backside			
<b>Fixation to the underground</b>	Invisible attachment to surface with expansion bolts or threaded rods			
<b>Weight (kg) ±</b>	13	15,5	18	23
<b>Dimensions base plate</b>	320 mm x 320 mm			
<b>IP-value</b>	55			
<b>Warranty</b>	2 years			

## Dimensions base plate:

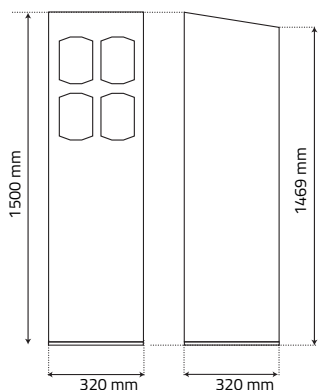


# Dimensions

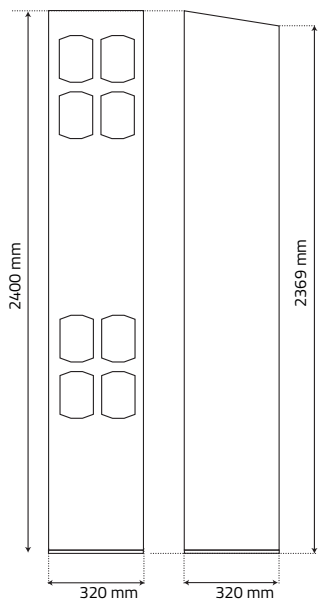
Operating column for cars (1,2m)



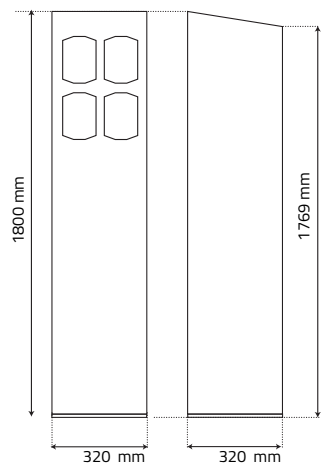
Operating column for van (1,5m)



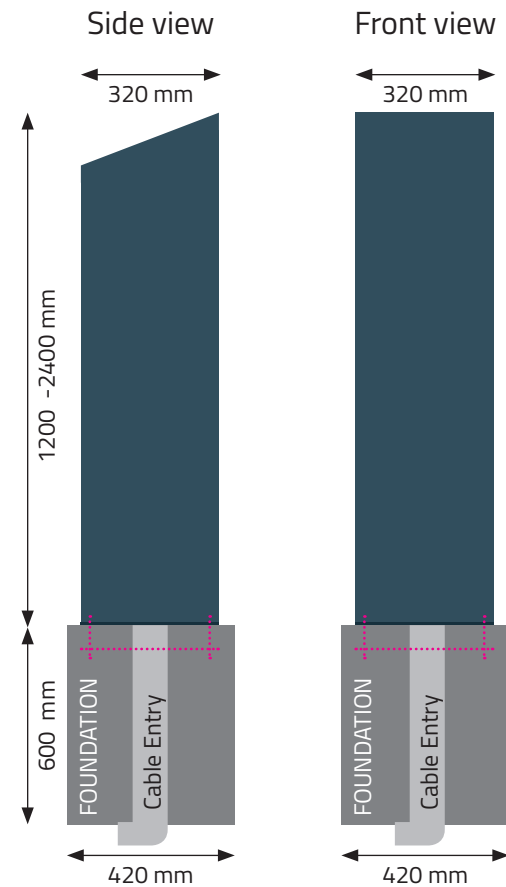
Operating column for trucks (2,4m)



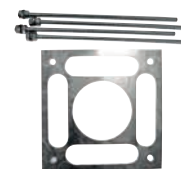
Operating column for pedestrians (1,8m)



## Dimensions foundation construction



Positioning mold center distance 200 x 200 mm



14-02-2019 ▪ The information given is subject to change without any notice.