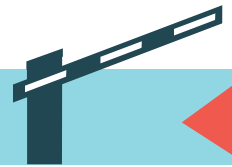


Barrier options

Vehicle detection • Photocell security



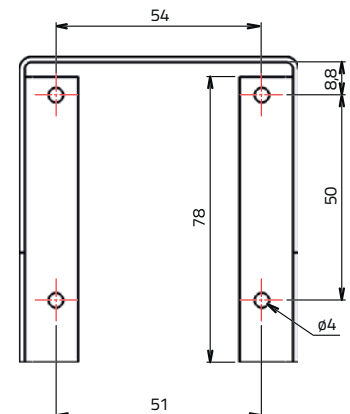
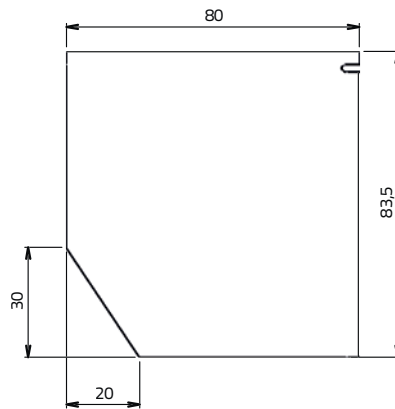
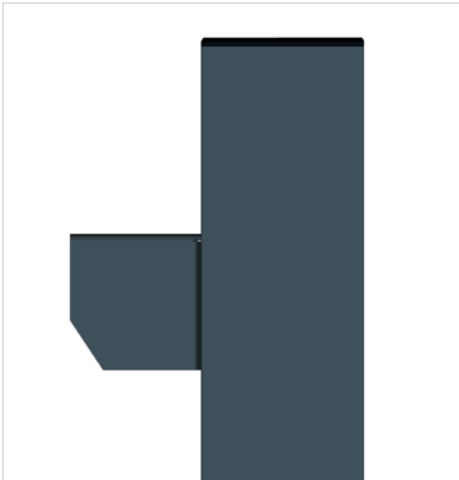
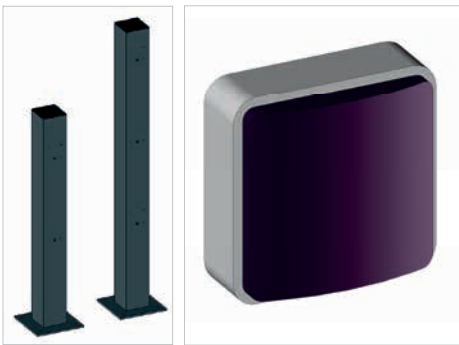
Set of 2 surface-mounted photocells

- Polycarbonate body, extremely strong
- Adapter bowl EKA03 to simplify useful preparations for recessed mounting
- Compatible with the most popular standards on the market to replace the old photocells or cover annoying existing setups without the need of extra adaptors
- D type device according to specification EN12453 which allows to pick-up obstacles on the optical axis between transmitter (TX) and receiver (RX)

References:

Photocell: 4-050505-0008-000

Rain protection cap: 1-079900-0004-000-906-10



Technical specifications

Estimated range	15 m (30 m with jumper + "10" cut)
Power supply	Without jumper 24 Vac/Vdc limits: 18-35 Vdc, 15-28 Vac With 12 Vac/Vdc jumper limits: 10-18 Vdc, 9-15 Vac
Photocell adjustability	30° approx. on the all axes
Absorption	25 mA RX, 30 mA TX
Protection class	IP 44
Operating temperature	-20°C upto +50°C
Relay range	Max 500 mA and 48 V
Dimension W x D x H	70 x 35 x 70 mm
Weight	180 g
Warranty	1 year